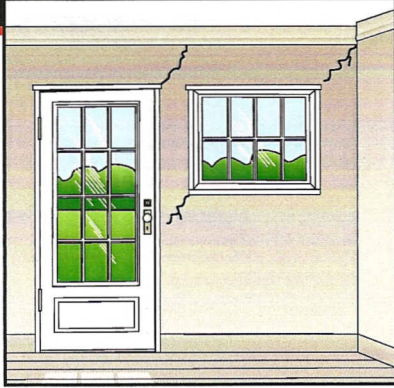


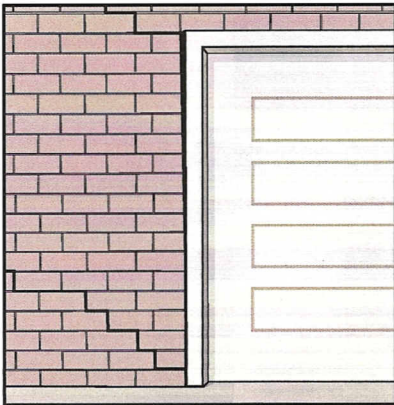
Signs of Foundation Failure

Know the signs before it's too late.



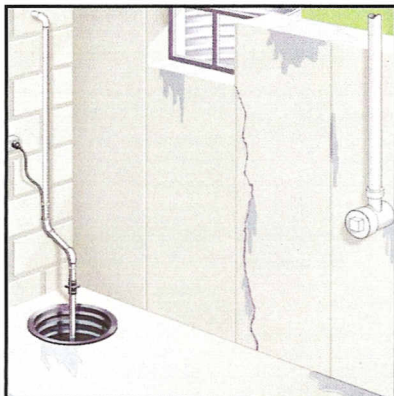
Your Home's Interior

- Cracks in drywall
- Doors and windows that stick
- Misaligned doors and windows
- Trim or molding misaligned



Your Home's Exterior

- Cracks in brickwork
- Gaps around doors and windows
- Fascia board pulled away
- Leaning or tilted chimneys



Your Basement

- Foundation seepage
- Cracks in walls
- Bowed walls
- Sinking foundation